



# Association of Professional Astrologers Inc.

Incorporated in ACT on 14th July 2000

AO3483

Postal Address

The APA Secretary

PO Box 515

**WATERFORD QLD 4133**

## WEBSITE - Member Directory

<http://www.faainc.org.au/apa.html>

or go to member organisation at the

FAA Website <http://www.faainc.org.au>

Each Australian State as an APA Liaison person as listed on the website for further information

JANUARY 2006  
AO3483



# Association of Professional Astrologers Inc

## Vision Statement

The Association of Professional Astrologers is committed to the development and maintenance of best practice in the astrological field through the promotion of strong educational standards, professional competency, ethical understanding and integrity.

Special points of interest:

- Benefits of APA Membership
- Qualifications for Membership
- Professional Indemnity Insurance

### Contents

Benefits of Membership	2
Code of Conduct	4
Insurance	5
Qualifications	6
Steps to Membership	8
Diary	10
Contacts	12





## APA Code of Conduct

*As a member of the Astrological profession I shall at all times abide by the following Code of Behaviour:-*

1. I shall conduct myself professionally at all times so as to comply with the generally accepted standards of professional behaviour.
2. I shall, in accordance with astrological principles, render my professional services for no other purpose other than the total well being of my clients.
3. I shall at all times respect the confidentiality of my clients and, apart from the consultation being sought, shall only use their birth data (for any other purpose) with their specific written consent.
4. I shall at all times keep the standard of my professional work as high as possible. I shall endeavour to improve upon my technical skills and professional standards whenever possible.
5. I shall never criticize, condemn or otherwise denigrate a member of the Association in the presence of any client or other layperson. I shall point out astrological error or breach of the professional conduct required under this statement, and shall report such breach to the Secretary of the Association. This clause shall not prevent a member from protecting the reputation of astrology in any forum from fraud or charlatanism.
6. I shall be truthful in all advertising undertaken in the course of my profession.
7. I shall ensure that anyone employed by me shall strictly adhere to the same standards of professional behaviour as long as s/he is employed by me.
8. I shall, upon being found by the APA to have transgressed any of the rules of the Association or this Statement of Professional Behaviour, voluntarily surrender and return all certificates issued by the Association.

## Steps to Becoming an APA Member

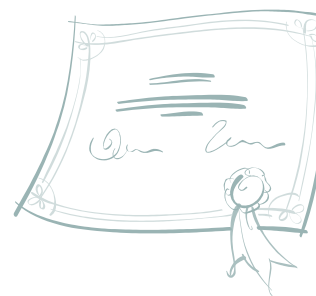
Once your membership application is received the Membership Sub-Committee will assess the application for Practitioner/Teacher for accreditation. The Committee may accept or reject any application.

If application is incomplete then you will be contacted for further information as soon as possible.

On approval you will be sent a letter informing you and also issued with a Certificate of Membership of the APA.

You will also be contacted regarding the payment of your joining and membership fees. The joining fee is a one off unless your membership lapses. Membership fees are paid on joining (a sliding scale dependant on your joining date) and afterwards your membership fee will be due each year on the 31st October. You will be issued with a renewal reminder each year.

The following pages have been created for you to keep a list of training hours, counselling theory requirements, supervision plus conferences and workshops attended.



## Steps to Becoming an APA Member

1. Obtain your qualifications and training as set out on pages 5 & 6 keeping in mind this information
2. It is a good idea to attend your local FAA branch meetings during your training as you will learn and also make connections with APA members
3. Download a membership application form from the APA website <http://www.faainc.org.au/apa.html>
4. Check the website for APA members who you know you and you believe would be prepared to nominate you as a member and provide a references *“as Applicants must provide a Nomination from a Professional Member of the APA and reports from two referees, one of whom must have been the applicant’s supervisor and both of whom must be Professional Members of the Association or equivalent.”*
5. Request these written references
6. Have your verifying documents copied and provide a Statutory Declaration as to their authenticity.
7. Complete your application for membership making sure to provide all the information required
8. Sign your application (pages 1 and 4)
9. Have your nominator sign the application (page 1)
10. Post to your application making sure to included all your documents, the signed application and references to the APA Secretary PO Box 515 WATERFORD QLD 4133

## Future Directions of the APA

The APA is in the process of developing an assessment and accreditation for astrological counselling, education and possible research.

The APA will have an ongoing role in refining the assessment and accreditation process itself whilst at the same time expanding the knowledge and skills base deemed essential for quality education and practice in astrology within Australia.

## Professional Indemnity Insurance

The APA has been accepted by OAMPS Insurance Brokers under the Natural Therapists Insurance Scheme as an accredited association, thus allowing our members to obtain Professional Indemnity insurance, as well as Public Liability insurance at the special rates under the scheme. This is a very exciting development for our Association, as to my knowledge the APAI in England is the only other Astrological Association to be granted professional indemnity insurance. This insurance has been impossible to obtain at a reasonable rate in the past for astrologers.

The dedicated work of the APA Executive Committee has made this possible for astrological practitioners with APA membership. Members of the committee have gone through an extensive process for acceptance and our success has been due to the standards of our Association for membership and our developing requirements of counselling training and supervision for practising astrologers. All processing and administration for members insurance is handled through OAMPS Head Office in Melbourne.

## Qualifications for Membership

### 1 Astrological Qualifications

Minimum qualification requirements is the Practitioners Certificate, Federation of Australian Astrologers (FAA) or equivalent eg Chiron Centre Diploma, Canopus Diploma, AstroLogos Diploma with other qualifications considered as part of the overall application for membership.

### 2. Training

(a) Applicants for APA Accreditation should have completed 320 hours of theoretical and practical training over a minimum of four years

**OR**

(b) Should have completed 240 hours of theoretical and practical training over a minimum of two years, plus have worked as an astrologer for a minimum of two years after completing study. .

### 3. Counselling

All applicants must have completed a minimum of 30 hours counselling theory as part of astrological training or achieved separately from a recognised training program.

### 4. Supervision

In addition to the required training hours, applicants must have been **supervised** for a minimum of 25 hours with an APA approved practitioner.

For supervision to meet membership criteria there must be an arrangement specifically for the purpose of supervision between the supervisor and supervisee prior to supervision taking place.

## Qualifications for Membership

### 4. Supervision (Cont.)

The hours accredited as “supervision” must be different from those hours accredited as “training”. In the case of **group supervision**, a proportion of the total number of hours of supervision should be accredited to each Individual supervisee. Group supervision shall be accredited as follows:

- a. (1 – 4 (inclusive) supervisees: the full total number of hours will be accredited
- b. 5 – 6 (inclusive) supervisees: 2 hours for every 3 hours accredited
- c. 7 – 8 (inclusive) supervisees: 2 hours for every 4 hours accredited
- d. 9 supervisees or more is considered training not supervision.

In the case of 2 (a) this supervision requirement may take place during the last two years of the training program. In the case of 2 (b) this supervision requirement must take place after the completion of training.

### 5. Nominator and Referee’s Reports

Applicants must provide a Nomination from a Professional Member of the APA and reports from two referees, one of whom must have been the applicant’s supervisor and both of whom must be Professional Members of the Association or equivalent.

### 6. Individual Assessment

A Membership Sub-Committee is appointed for accreditation purposes and will individually assess each membership application for Practitioner/Teacher accreditation. The Committee may accept or reject any application.